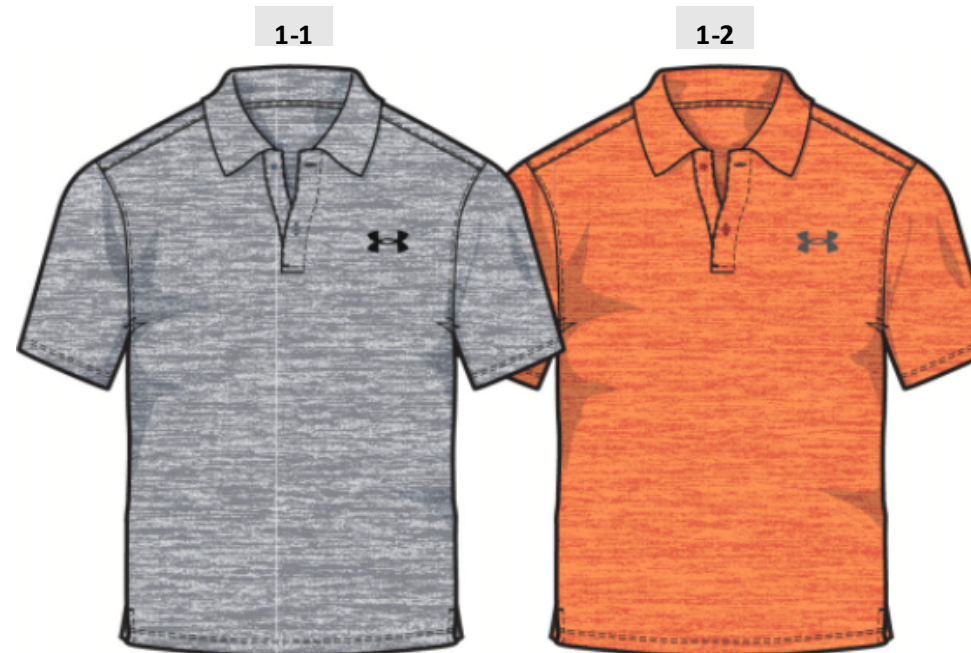


FALL BOY'S GROUP (12M-7)- MATCH PLAY - SHIP JULY 2025

	INFANT - P6			TODDLER - P6			4-7 - P7			
SIZE BREAKDOWN:	12M	18M	24M	2T	3T	4T	4	5	6	7
SIZE RATIO:	1	3	2	2	2	2	1	2	2	2

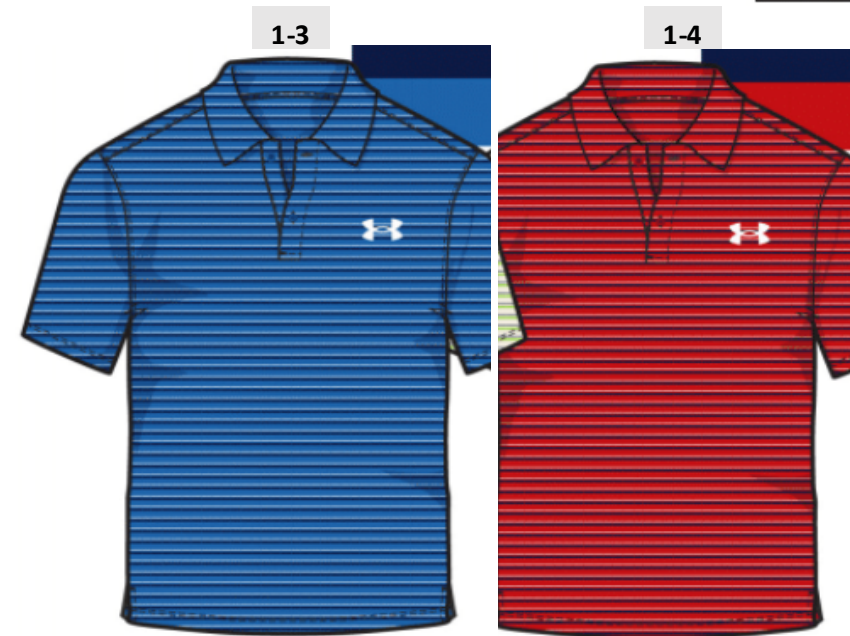


COST:
2T-7: \$13.50
INF: \$12.60

1-1
CASTLEROCK/ STEEL
BLACK
4-7: 25UAFIB07E-021 \$30.00
TOD: 25UAFIB07D-021 \$30.00
INF: 25UAFIB07C-021 \$28.00

1-2
SQUAD ORANGE/ ORANGE BASE
CASTLEROCK
4-7: 25UAFIB07E-844 \$30.00

COST:
2T-7: \$14.50
INF: \$13.50



1-3
BLUE ATLANTIS
WASHED NAVY
WHITE
4-7: 25UAFIB08E-476 \$32.00
TOD: 25UAFIB08D-476 \$32.00
INF: 25UAFIB08C-476 \$30.00

1-4
RED
WHITE
MIDNIGHT NAVY
4-7: 25UAFIB08E-621 \$32.00



1-5
FIELD KHAKI
CASTLEROCK
4-7: 25UAFIC06E-265 \$38.00
TOD: 25UAFIC06D-265 \$38.00

1-6
CASTLEROCK
BLACK
4-7: 25UAFIC06E-021 \$38.00

COST:
2T-7: \$17.10



1-7
HYPER GREEN
CASTLEROCK/MOD GRAY TWIST
BLACK
TOD: 25UAFII37D-321 \$40.00
INF: 25UAFII37C-321 \$36.00
NB: 25UAFII37A-321 \$36.00



1-8
BLUE ATLANTIS/TEAM ROYAL
BLACK
WHITE
TOD: 25UAFII37D-476 \$40.00
INF: 25UAFII37C-476 \$36.00
NB: 25UAFII37A-476 \$36.00

COST:
2T-4T: \$15.00
0M-24M: \$14.00

FALL BOY'S (2T-7)- BACK TO SCHOOL SS SEPARATES - SHIP JULY 2025

	TODDLER - P6			4-7 - P7			
SIZE BREAKDOWN:	2T	3T	4T	4	5	6	7
SIZE RATIO:	2	2	2	1	2	2	2

ALL SHIRTS
COST:
2T-7: \$9.00



2-1
BLUE ATLANTIS
HYPER GREEN/ BLAZE ORANGE
WHITE
4-7: 25UAFIA25E-476 \$20.00



2-2
STONE
BLUE ATLANTIS/ TIMBERWOLF TAUPE
4-7: 25UAFIA13E-279 \$20.00



2-3
BLUE ATLANTIS
MIDNIGHT NAVY/ WHITE
4-7: 25UAFIA14E-476 \$20.00
TOD: 25UAFIA14D-476 \$20.00



2-4
MIDNIGHT NAVY
BLUE ATLANTIS THORN CRACKLE CAMO
WHITE
4-7: 25UAFIA17E-413 \$20.00
TOD: 25UAFIA17D-413 \$20.00



2-5
SQUAD ORANGE/ ORANGE BASE TWIST
BLUE ATLANTIS
4-7: 25UAFIA15E-844 \$20.00
TOD: 25UAFIA15D-844 \$20.00



2-6
ROYAL
MIDNIGHT NAVY
WHITE/ HYPER GREEN
4-7: 25UAFIA28E-402 \$20.00
TOD: 25UAFIA28D-402 \$20.00



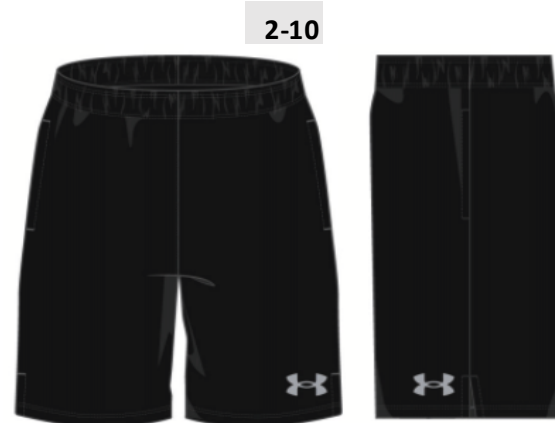
2-7
HYPER GREEN
MARINE OD CRACKLE CAMO
BLACK
4-7: 25UAFIA17E-321 \$20.00
TOD: 25UAFIA17D-321 \$20.00



2-8
REF #: UAFIA19B
STYLE NAME: UA BASEBALL OI
FABRIC: CVC JERSEY -50% CO
ART APPLICATION: SCREENPRI
CASTLEROCK HEATHER
WHITE/ HYPER GREEN/ BLAZE ORAN
BLUE ATLANTIS/ RED / SQUAD ORAN
4-7: 25UAFIA19E-021 \$20.00



2-9
ORANGE BASE
WHITE
4-7: 25UAFIA23E-804 \$20.00



2-10
BLACK
MOD GRAY
4-7: 25UASIC53E-001 \$20.00



2-11
BLACK/ WHITE
MOD GRAY
4-7: 25UASIC05E-003 \$20.00



2-12
CASTLEROCK
BLACK/ WHITE
4-7: 25UASIC06E-021 \$20.00

COST: 4-7: \$9.00

COST: 4-7: \$9.00

COST: 4-7: \$9.00

FALL BOY'S (2T-7)- BACK TO SCHOOL LS SEPARATES - SHIP JULY 2025

SIZE BREAKDOWN:	TODDLER - P6			4-7 - P7			
	2T	3T	4T	4	5	6	7
SIZE RATIO:	2	2	2	1	2	2	2

3-1



MIDNIGHT NAVY X DOWNPOUR GRAY TWIST
BLUE ATLANTIS/ SQUAD ORANGE
4-7: 25UAFIA31E-413 \$24.00
TOD: 25UAFIA31D-413 \$24.00

COST: 2T-7: \$10.80

HD INK

3-3

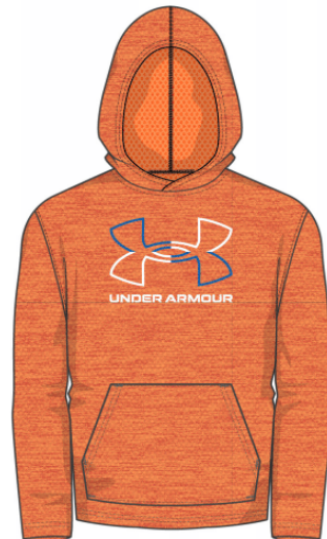


BLUE ATLANTIS
FLASHLIGHT/ WHITE/ SILVER METALLIC
4-7: 25UAFIA36E-476 \$24.00
TOD: 25UAFIA36D-476 \$24.00

COST: 2T-7: \$10.80

GLOW IN THE DA

3-2



SQUAD ORANGE X ORANGE BLASE TWIST
WHITE/ BLUE ATLANTIS

4-7: 25UAFIB13E-844 \$36.00

COST: 4-7: \$12.50

3-4



MOD GRAY HEATHER
BLUE ATLANTIS/ FLASHLIGHT/ WHITE
4-7: 25UAFIA38E-052 \$24.00

COST: 4-7: \$10.80

3-5



BLACK

4-7: 25UAFIA37E-001 \$24.00

COST: 4-7: \$10.80

3-6



BLUE ATLANTIS X ROYAL TWIST
WHITE/ FLASHLIGHT

4-7: 25UAFIB13E-476 \$36.00
TOD: 25UAFIB13D-476 \$36.00

COST: 2T-7: \$12.50

3-7



BLUE ATLANTIS
WHITE/ BLACK
4-7: 25UAFIC11E-476 \$30.00

COST: 4-7: \$13.50

FABRIC: E
100% PO
*INCLUDE
ART APPL



3-8



BLACK
GRAPHITE
4-7: 25UAFIC21E-001 \$32.00

COST: 4-7: \$14.40

3-9



4-7: 25UAFIC15E-413 \$32.00
TOD: 25UAFIC15D-413 \$32.00

COST: 2T-7: \$14.40

3-10



4-7: 25UAFIC10E-021 \$30.00
TOD: 25UAFIC10D-021 \$30.00

COST: 2T-7: \$13.50

CAS
V

FALL BOY'S (12M-7) - BACK TO SCHOOL SETS - SHIP JULY 2025

	INFANT - P6			TODDLER - P6			4-7 - P7			
SIZE BREAKDOWN:	12M	18M	24M	2T	3T	4T	4	5	6	7
SIZE RATIO:	1	3	2	2	2	2	1	2	2	2

4-1



COST:
2T-7: \$14.70
12-24M: \$13.30

ROYAL
BLACK
HYPER GREEN/ BLAZE ORANGE
4-7: 25UAFI125E-402 \$42.00
TOD: 25UAFI125D-402 \$42.00
INF: 25UAFI125C-402 \$38.00

4-2



COST:
2T-7: \$14.70
12-24M: \$13.30

MOD GRAY HEATHER
MIDNIGHT NAVY
4-7: 25UAFI120E-052 \$42.00
TOD: 25UAFI120D-052 \$42.00
INF: 25UAFI120C-052 \$38.00

4-3



COST:
2T-7: \$14.70
12-24M: \$13.30

BLUE ATLANTIS
MIDNIGHT NAVY
4-7: 25UAFI123E-476 \$42.00
TOD: 25UAFI123D-476 \$42.00
INF: 25UAFI123C-476 \$38.00

4-4



COST:
2T-7: \$15.50
12-24M: \$14.00

CASTLEROCK
BLACK
4-7: 25UAFI131E-021 \$44.00
TOD: 25UAFI131D-021 \$44.00
INF: 25UAFI131C-021 \$40.00

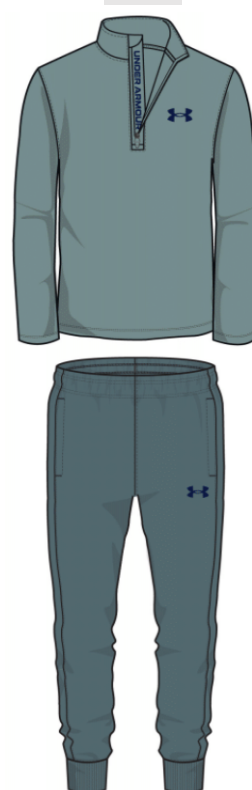
4-5



COST:
2T-7: \$15.75
12-24M: \$14.00

ROYAL
BLACK
4-7: 25UAFI136E-402 \$45.00
TOD: 25UAFI136D-402 \$45.00
INF: 25UAFI136C-402 \$40.00

4-6



COST:
2T-7: \$15.75
12-24M: \$14.00

SERPENTINE
JASPER BLUE
4-7: 25UAFI136E-361 \$45.00
TOD: 25UAFI136D-361 \$45.00
INF: 25UAFI136C-361 \$40.00

4-7



COST:
2T-7: \$24.00
12-24M: \$22.00

BLUE ATLANTIS
4-7: 25UAFI11NE-476 \$60.00
TOD: 25UAFI11ND-476 \$60.00
INF: 25UAFI11NC-476 \$55.00

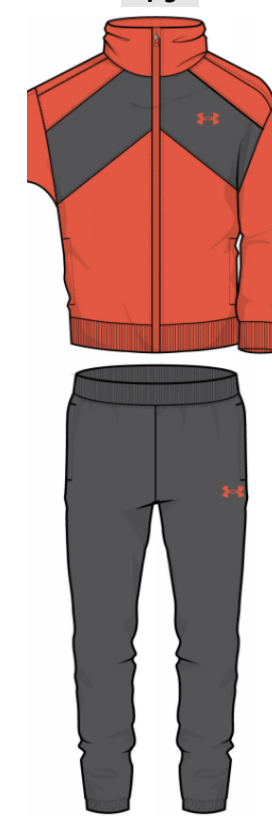
4-8



COST:
2T-7: \$16.80
12-24M: \$15.40

MIDNIGHT NAVY/
SQUAD ORANGE
4-7: 25UAFI150E-413 \$48.00
TOD: 25UAFI150D-413 \$48.00
INF: 25UAFI150C-413 \$44.00

4-9



COST:
2T-7: \$16.80
12-24M: \$15.40

ORANGE BASE
CASTLEROCK
4-7: 25UAFI151E-804 \$48.00
TOD: 25UAFI151D-804 \$48.00
INF: 25UAFI151C-804 \$44.00

FALL BOY'S (2T-7) - FASHION SEPARATES - SHIP AUGUST 2025

	TODDLER - P6			4-7 - P7			
SIZE BREAKDOWN:	2T	3T	4T	4	5	6	7
SIZE RATIO:	2	2	2	1	2	2	2



5-1
CASTLEROCK/ MOD GRAY TWIST
DCN

4-7: 25UAFIA15E-021 \$20.00

COST: 4-7: \$9.00

CLEAR FOIL



5-2
RED
MIDNIGHT NAVY/ ASH BLUE

4-7: 25UAFIA27E-621 \$20.00
TOD: 25UAFIA27D-621 \$20.00

COST: 2T-7: \$9.00



5-3
FIELD KHAKI HEATHER
ASH BLUE/ RED

4-7: 25UAFIA22E-265 \$20.00
TOD: 25UAFIA22D-265 \$20.00

COST: 2T-7: \$9.00



5-4
BLACK
WHITE/ CASTLEROCK

4-7: 25UAFIA21E-001 \$20.00
TOD: 25UAFIA21D-001 \$20.00

COST: 2T-7: \$9.00



5-5
RED X SCARLET TWIST
BLACK FLECTARN

4-7: 25UAFIA33E-621 \$24.00
TOD: 25UAFIA33D-621 \$24.00

COST: 2T-7: \$10.80



5-6
BLUE SMOKE X BLUE CALM TWIST
BLUE ATLANTIS FLECTARN

4-7: 25UAFIA33E-480 \$24.00
TOD: 25UAFIA33D-480 \$24.00

COST: 2T-7: \$10.80



5-7
RED

4-7: 25UAFIA44E-621 \$24.00

COST: 4-7: \$10.80

HD INK



5-8
BLUE SMOKE

4-7: 25UAFIA41E-480 \$24.00

COST: 4-7: \$10.80

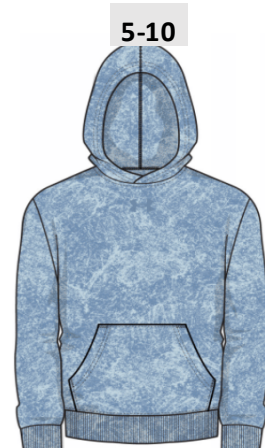


5-9
RED

4-7: 25UAFIA40E-621 \$24.00
TOD: 25UAFIA40D-621 \$24.00

COST: 2T-7: \$10.80

PUFF I



5-10
BLUE SMOKE ACID WASH

4-7: 25UAFIB24E-480 \$40.00
TOD: 25UAFIB24D-480 \$40.00

COST: 2T-7: \$14.25



5-11
CASTLEROCK HEATHER

4-7: 25UAFIB26E-021 \$50.00

COST: 4-7: \$20.00



5-12
RED

4-7: 25UAFIB25E-621 \$40.00
TOD: 25UAFIB25D-621 \$40.00

COST: 2T-7: \$14.00



5-13
BLACK

4-7: 25UAFIC18E-001 \$40.00

COST: 4-7: \$16.00



5-14

4-7: 25UAFIC08E-413 \$30.00
TOD: 25UAFIC08D-413 \$30.00

COST: 2T-7: \$13.50



5-15
BLACK
MOD GRAY/ WHITE

4-7: 25UASIC06E-001 \$20.00
TOD: 25UASIC06D-001 \$20.00

COST: 2T-7: \$9.00



5-16
BLACK / RED

25UAFIC10E-989 \$30.00
25UAFIC10D-989 \$30.00

COST: 2T-7: \$13.50



5-17
BLACK
BLACK FLECTARN
CASTLEROCK/ WHITE

4-7: 25UAFIC12E-001 \$30.00
TOD: 25UAFIC12D-001 \$30.00

COST: 2T-7: \$13.50



5-18
BLACK

4-7: 25UAFIC07E-001 \$40.00

COST: 4-7: \$17.00

FALL BOY'S (12M-7) - SETS - SHIP AUGUST 2025

	INFANT - P6			TODDLER - P6			4-7 - P7			
SIZE BREAKDOWN:	12M	18M	24M	2T	3T	4T	4	5	6	7
SIZE RATIO:	1	3	2	2	2	2	1	2	2	2

6-1

COST:
2T-7: \$14.70
12-24M: \$13.30

RED

4-7: 25UAFII21E-621 \$42.00
TOD: 25UAFII21D-621 \$42.00
INF: 25UAFII21C-621 \$38.00

6-2

COST:
2T-7: \$15.75
0-24M: \$14.00

BLUE ATLANTIS X BLUE SMOKE TWIST

4-7: 25UAFII34E-476 \$45.00
TOD: 25UAFII34D-476 \$45.00
INF: 25UAFII34C-476 \$40.00
NB: 25UAFII34A-476 \$40.00

6-3

COST:
2T-7: \$15.50
0-24M: \$14.00

RED

4-7: 25UAFII30E-621 \$44.00
TOD: 25UAFII30D-621 \$44.00
INF: 25UAFII30C-621 \$40.00
NB: 25UAFII30A-621 \$40.00

6-4

COST:
2T-7: \$24.00
12-24M: \$22.00

4-7: 25UAFII1NE-053 \$60.00
TOD: 25UAFII1ND-053 \$60.00
INF: 25UAFII1NC-053 \$55.00

6-5

COST:
2T-7: \$19.00
0-24M: \$17.50

RED
BLACK
MOD GRAY HEATHER

4-7: 25UAFII44E-621 \$55.00
TOD: 25UAFII44D-621 \$55.00
INF: 25UAFII44C-621 \$50.00
NB: 25UAFII44A-621 \$50.00

RINT, HEATSEAL (ET ON HOODIE)
ART APPLICA *INCLUDES K

6-6

COST:
2T-7: \$17.75
12-24M: \$16.25

BLUE SMOKE TOUR DYE

4-7: 25UAFII0JE-480 \$48.00
TOD: 25UAFII0JD-480 \$48.00
INF: 25UAFII0JC-480 \$44.00

6-7

COST:
2T-7: \$17.75
12-24M: \$16.25

RED TOUR DYE

4-7: 25UAFII0EE-621 \$48.00
TOD: 25UAFII0ED-621 \$48.00
INF: 25UAFII0EC-621 \$44.00

6-8

COST:
2T-7: \$17.75
12-24M: \$16.25

BLUE ATLANTIS

4-7: 25UAFII42E-476 \$48.00

6-9

COST:
2T-7: \$14.75
12-24M: \$13.50

BLACK

4-7: 25UAFII0LE-001 \$48.00
TOD: 25UAFII0LD-001 \$48.00
INF: 25UAFII0LC-001 \$44.00

6-10

COST:
2T-7: \$16.80
12-24M: \$15.40

RED

4-7: 25UAFII41E-621 \$48.00
TOD: 25UAFII41D-621 \$48.00
INF: 25UAFII41C-621 \$44.00

WINTER BOY'S (2T-7) - FASHION SEPARATES - SHIP SEPTEMBER 2025

	TODDLER - P6			4-7 - P7			
SIZE BREAKDOWN:	2T	3T	4T	4	5	6	7
SIZE RATIO:	2	2	2	1	2	2	2



7-1

HYPER GREEN
BLACK/ WHITE

4-7: 25UAFIA31E-321 \$24.00
TOD: 25UAFIA31D-321 \$24.00

COST: 2T-7: \$10.80



7-2

STEEL / WHITE TWIST
STEEL
CASTLEROCK

4-7: 25UAFIB12E-053 \$40.00

COST: 4-7: \$14.25



7-3

YESTER

HYPER GREEN / CYBER GREEN TWIST
DOWNPOUR GRAY/ CYBER GREEN

4-7: 25UAFIB11E-321 \$40.00
TOD: 25UAFIB11D-321 \$40.00

COST: 2T-7: \$14.00



7-4

CASTLEROCK
BLACK

4-7: 25UAFIC08E-021 \$30.00
TOD: 25UAFIC08D-021 \$30.00

COST: 2T-7: \$13.50



7-5

BLACK
CASTLEROCK FLECTARN
HYPERGREEN

4-7: 25UAFIB25E-001 \$40.00
TOD: 25UAFIB25D-001 \$40.00

COST: 2T-7: \$14.00



7-6

CASTLEROCK/ MOD GRAY TWIST
CASTLEROCK/ FLASHLIGHT

4-7: 25UAFIB11E-021 \$40.00
TOD: 25UAFIB11D-021 \$40.00

COST: 2T-7: \$14.00

WINTER BOY'S (12M-7) - SETS - SHIP SEPTEMBER 2025

	INFANT - P6			TODDLER - P6			4-7 - P7			
SIZE BREAKDOWN:	12M	18M	24M	2T	3T	4T	4	5	6	7
SIZE RATIO:	1	3	2	2	2	2	1	2	2	2



HYPER GREEN
BLACK

4-7: 25UAFI136E-321 \$45.00
TOD: 25UAFI136D-321 \$45.00
INF: 25UAFI136C-321 \$40.00

COST:
2T-7: \$15.75
12-24M: \$14.00



BLACK TOUR DYE
BLACK
HYPER GREEN

4-7: 25UAFI10BE-001 \$48.00
TOD: 25UAFI10BD-001 \$48.00
INF: 25UAFI10BC-001 \$44.00

COST:
2T-7: \$17.75
12-24M: \$16.25



ROYAL
CASTLEROCK HEATHER
HYPER GREEN

4-7: 25UAFI145E-402 \$55.00
TOD: 25UAFI145D-402 \$55.00
INF: 25UAFI145C-402 \$50.00
NB: 25UAFI145A-402 \$50.00

COST:
2T-7: \$19.00
0-24M: \$17.50



BLACK
ROYAL
HYPER GREEN

4-7: 25UAFI151E-001 \$48.00
TOD: 25UAFI151D-001 \$48.00
INF: 25UAFI151C-001 \$44.00

COST:
2T-7: \$16.80
12-24M: \$15.40



HYPER GREEN / CYBER GREEN TWIST
BLACK

4-7: 25UAFI153E-311 \$50.00
TOD: 25UAFI153D-311 \$50.00
INF: 25UAFI153C-311 \$46.00

COST:
2T-7: \$17.75
12-24M: \$16.25



CASTLEROCK
BLACK

4-7: 25UAFI150E-021 \$48.00
TOD: 25UAFI150D-021 \$48.00
INF: 25UAFI150C-021 \$44.00

COST:
2T-7: \$16.80
12-24M: \$15.40

WINTER BOY'S (2T-7) - FASHION SEPARATES - SHIP OCTOBER 2025

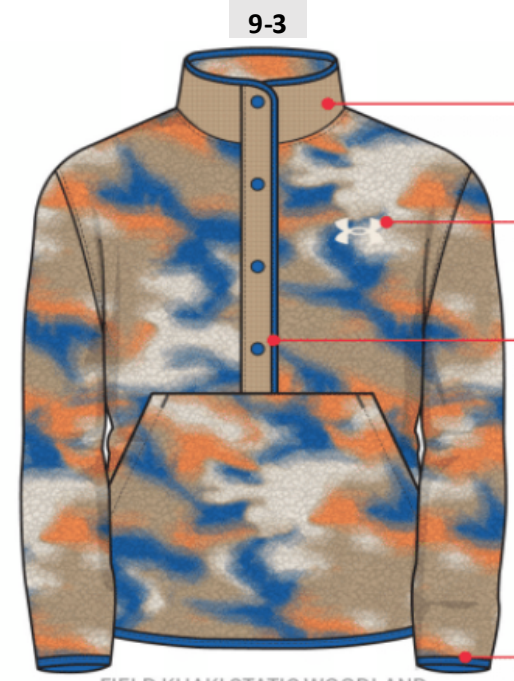
	TODDLER - P6			4-7 - P7			
SIZE BREAKDOWN:	2T	3T	4T	4	5	6	7
SIZE RATIO:	2	2	2	1	2	2	2



STEEL X HALO GRAY GRAY TWIST
RED/ BLAZE ORANGE/ SQUAD ORANGE
4-7: 25UAFIA32E-053 \$24.00
TOD: 25UAFIA32D-053 \$24.00
COST: 2T-7: \$10.80



SQUAD ORANGE X ORANGE BASE TWIST
SURPLUS ORANGE/ ORANGE BASE
WHITE
4-7: 25UAFIA35E-844 \$24.00
TOD: 25UAFIA35D-844 \$24.00
COST: 2T-7: \$10.80



FIELD KHAKI STATIC WOODLAND
BLUE ATLANTIS
STONE
4-7: 25UAFIB17E-265 \$44.00
COST: 4-7: \$19.50



BLUE ATLANTIS X ROYAL TWIST
SQUAD ORANGE/ SONIC YELLOW/ FLASHLIGHT
4-7: 25UAFIA32E-476 \$24.00
TOD: 25UAFIA32D-476 \$24.00
COST: 2T-7: \$10.80



CASTLEROCK X MOD GRAY TWIST
BLUE ATLANTIS/ FLASHLIGHT
4-7: 25UAFIA34E-021 \$24.00
TOD: 25UAFIA34D-021 \$24.00
COST: 2T-7: \$10.80



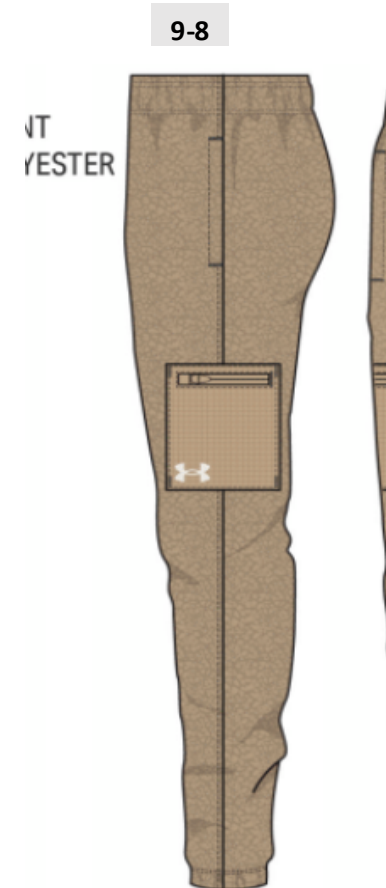
BLACK
WHITE
IC08E-001 \$30.00
IC08D-001 \$30.00

COST: 2T-7: \$13.50



VI, ACID WASH
FIELD KHAKI ACID WASH
CAMEL
4-7: 25UAFIB24E-265 \$40.00
TOD: 25UAFIB24D-265 \$40.00

COST: 2T-7: \$14.25



4-7: 25UAFIC14E-265 \$40.00

COST: 4-7: \$18.00



BLACK/ WHITE
4-7: 25UAFIC11E-001 \$30.00 4-7: 25UA

COST: 4-7: \$13.50

WINTER BOY'S (12M-7) - SETS - SHIP OCTOBER 2025

	INFANT - P6			TODDLER - P6			4-7 - P7			
SIZE BREAKDOWN:	12M	18M	24M	2T	3T	4T	4	5	6	7
SIZE RATIO:	1	3	2	2	2	2	1	2	2	2



10-1

WASHED NAVY
BLUE ATLANTIS
BLUE ATLANTIS / WHITE
4-7: 25UAFII40E-477 \$48.00
TOD: 25UAFII40D-477 \$48.00
INF: 25UAFII40C-477 \$44.00

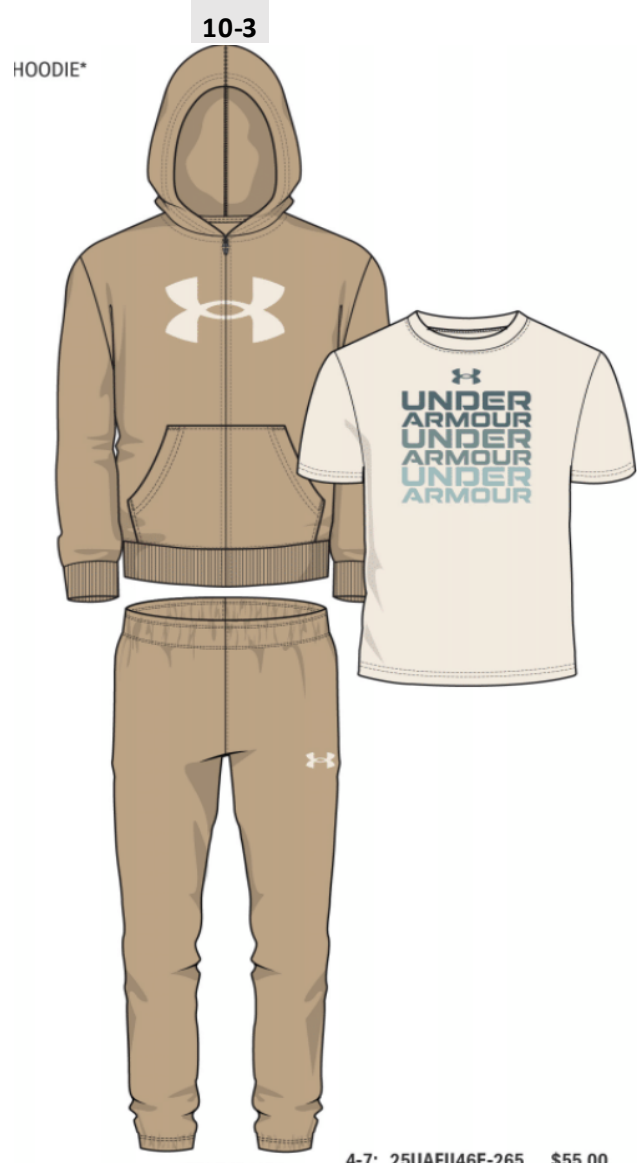
COST:
2T-7: \$16.80
12-24M: \$15.40



10-2

STONE
DOWNPOUR GRAY
ASH BLUE
4-7: 25UAFII41E-279 \$48.00
TOD: 25UAFII41D-279 \$48.00
INF: 25UAFII41C-279 \$44.00

COST:
2T-7: \$16.80
12-24M: \$15.40



10-3

HOODIE*

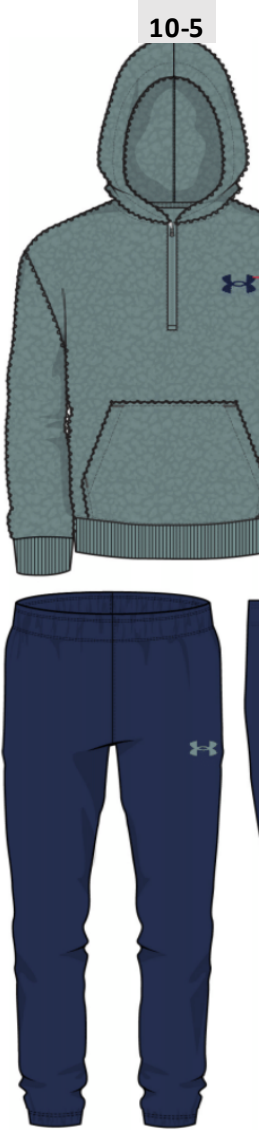
FIELD KHAKI
STONE
SERPENTINE
4-7: 25UAFII46E-265 \$55.00
TOD: 25UAFII46D-265 \$55.00
INF: 25UAFII46C-265 \$50.00
NB: 25UAFII46A-265 \$50.00

COST:
2T-7: \$19.00
0-24M: \$17.50



10-4

BLUE ATLANTIS/ MIDNIGHT NAVY TWIST
MIDNIGHT NAVY
WHITE
4-7: 25UAFII53E-476 \$50.00
TOD: 25UAFII53D-476 \$50.00
INF: 25UAFII53C-476 \$46.00



10-5

SERPENTINE
WASHED NAVY
4-7: 25UAFII52E-361 \$52.00
TOD: 25UAFII52D-361 \$52.00
INF: 25UAFII52C-361 \$48.00

COST:
2T-7: \$20.25
12-24M: \$19.25

COST:
2T-7: \$17.75
12-24M: \$16.25

WINTER BOY'S (4-7 AND YOUTH S-XL) - PUFFER COATS - SHIP SEPTEMBER 2024

	INFANT:			TODDLER:			4-7/4-6X:				YS-YXL:			
SIZE BREAKDOWN:	12M	18M	24M	2T	3T	4T	4	5	6	7/6x	YS	YM	YL	YXL
SIZE RATIO:	1	2	1	1	2	1	1	2	2	1	1	2	2	1

11-1



BLUE ATLANTIS
BLACK

25UJFIM07F-476 \$85.00
25UJFIM07E-476 \$75.00

COST:
YS-YXL: \$34.00
4-7: \$30.00

11-2



BLACK
CASTLEROCK

25UJFIM10F-001 \$85.00
25UJFIM10E-001 \$75.00

COST:
YS-YXL: \$34.00
4-7: \$30.00

11-3



JASPER BLUE
BLACK

25UJFIM06F-479 \$85.00
25UJFIM06E-479 \$75.00

COST:
YS-YXL: \$34.00
4-7: \$30.00

11-4



BLACK
CASTLEROCK

25UJFIM06F-001 \$85.00
25UJFIM06E-001 \$75.00

COST:
YS-YXL: \$34.00
4-7: \$30.00

11-5



DOWNPOUR GRAY
TITAN GRAY HEATHER

YS-YXL : 25UJFIM09F-062 \$85.00 PRE 6/25
4-7 : 25UJFIM09E-062 \$75.00 PRE 6/25

COST:
YS-YXL: \$34.00
4-7: \$30.00

11-6



BLACK
RED

25UJFIM09F-001 \$85.00
25UJFIM09E-001 \$75.00

COST:
YS-YXL: \$34.00
4-7: \$30.00

11-7



CAMEL
BLACK

25UJFIM09F-264 \$85.00

COST:
YS-YXL: \$34.00

11-8



BLACK

YS-YXL : 25UJFIM20F-001 \$110.00 OPEN 7/25

COST:
YS-YXL: \$40.00

WINTER BOY'S (2T-7 AND YTH S-XL) - LT WEIGHT COATS - SHIP SEPT 2025

	INFANT:			TODDLER:			4-7/4-6X:				YS-YXL:			
SIZE BREAKDOWN:	12M	18M	24M	2T	3T	4T	4	5	6	7/6x	YS	YM	YL	YXL
SIZE RATIO:	1	2	1	1	2	1	1	2	2	1	1	2	2	1

12-1



BLACK
CASTLEROCK

COST:
YS-YXL: \$26.00
4-7: \$23.20

:25UJFIM03F-001 \$80.00
:25UJFIM03E-001 \$70.00

12-2



RED
BLACK

COST:
YS-YXL: \$26.00
4-7: \$23.20

25UJFIM03F-621 \$80.00
25UJFIM03E-621 \$70.00

12-3



BLACK

COST:
YS-YXL: \$24.80
2T-7: \$22.40
12-24M: \$20.8

YS-YXL : 25UJFIB01F-001 \$62.00 OPEN 6/25
4-7: 25UJFIB01E-001 \$56.00 PRE 6/25
TODD: 25UJFIB01D-001 \$56.00 PRE 6/25

12-4



CAMEL
BLACK

JFIM05F-264 \$70.00
JFIM05E-264 \$60.00

12-5



BLUE ATLANTIS
BLACK
HYPER GREEN

COST:
YS-YXL: \$28.00
4-7: \$24.00

YS-YXL :25UJFIM17F-476 \$68.00 PRE

12-6



JASPER BLUE
FIELD KHAKI
BLACK

COST:
YS-YXL: \$26.00

YS-YXL :25UJFIM02F-479 \$68.00 PRE 6/
4-7:25UJFIM02E-479 \$58.00 PRE 6/

COST:
YS-YXL: \$26.00
4-7: \$23.20

FALL YOUTH BOY'S (YS-YXL) - OUTDOOR SEPARATES - SHIP JULY 2025

	4-7 - P7				YOUTH- P6			
SIZE BREAKDOWN:	4	5	6	7	YS	YM	YL	YXL
SIZE RATIO:	1	2	2	2	1	2	2	1

13-1



CANTEEN GREEN
FLASHLIGHT

S-YXL: 25UOFIA21F- 363 \$22.00

COST:
YS-YXL: \$9.90

13-2



WASHED NAVY
SUMMIT WHITE

YS-YXL: 25UOFIA23F- 477 \$22.00

COST:
YS-YXL: \$9.90

13-3



FIELD KHAKI
FLASHLIGHT

YS-YXL: 25UOFIA25F- 265 \$22.00

COST:
YS-YXL: \$9.90

13-4



SURPLUS ORANGE
FIELD KHAKI

YS-YXL: 25UOFIA15F- 804 \$22.00

13-5



TIMBERWOLF TAUPE

YS-YXL: 25UOFIA48F- 251 \$22.00

COST:
YS-YXL: \$9.90

13-6



BLUE CALM

YS-YXL: 25UOFIA28F- 439 \$22.00

COST:
YS-YXL: \$9.90

13-7



BLUE ATLANTIS / WASHED NAVY
BLUE CALM / MIDNIGHT NAVY

YS-YXL: 25UOFIB23F- 476 \$40.00

COST:
YS-YXL: \$14.50

FALL YOUTH & BOY'S (4-YXL) - OUTDOOR SEPARATES - SHIP AUGUST 2025

	4-7 - P7				YOUTH- P6			
SIZE BREAKDOWN:	4	5	6	7	YS	YM	YL	YXL
SIZE RATIO:	1	2	2	2	1	2	2	1



BLUE SMOKE
WASHED NAVY

YS-YXL: 25UOFIA29F-480 \$32.00
COST: YS-YXL: \$12.80



MOD GRAY HTR

YS-YXL: 25UOFIA38F-052 \$32.00
COST: YS-YXL: \$12.80



SERPENTINE HTR
BLACK

YS-YXL: 25UOFIA40F-361 \$32.00
COST: YS-YXL: \$12.80



BLUE SMOKE
WASHED NAVY

YS-YXL: 25UOFIA34F-480 \$32.00
COST: YS-YXL: \$12.80



STEEL / CASTLEROCK
EXPEDITION GREEN / FLASH LIGHT

YS-YXL: 25UOFIB22F-053 \$40.00
COST: YS-YXL: \$14.50



JASPER BLUE / SERPENTINE
BLACK / GREEN VIBE

YS-YXL: 25UOFIB22F-479 \$40.00
COST: YS-YXL: \$14.50



DARK MAROON
CINNA RED
SUMMIT WHITE

YS-YXL: 25UOFIA30F-600 \$32.00

COST: YS-YXL: \$12.80



EXPEDITION GREEN
GREEN CANTEEN
SUMMIT WHITE

YS-YXL: 25UOFIA30F-362 \$32.00

COST: YS-YXL: \$12.80



KHAKI BASE HTR
EXPEDITION GREEN

YS-YXL: 25UOFIA41F-260 \$32.00

COST: YS-YXL: \$12.80



JASPER BLUE

YS-YXL: 25UOFIB18F-479 \$48.00

COST: YS-YXL: \$13.50



BLACK

YS-YXL: 25UOFIB25F-001 \$40.00

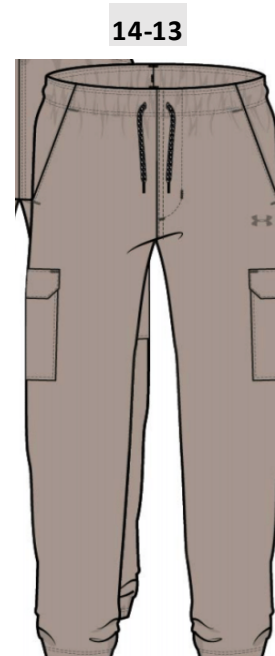
COST: YS-YXL: \$14.00



CASTLEROCK HTR

YS-YXL: 25UOFIC08F-021 \$36.00

COST: YS-YXL: \$12.60



TIMBERWOLF TAUPE

YS-YXL: 25UOFIC07F-251 \$48.00

COST: YS-YXL: \$16.80



EXPEDITION WOODLAND CAMO

YS-YXL: 25UOFIC11F-362 \$48.00

COST: YS-YXL: \$16.80



BLACK

YS-YXL: 25UOFIC06F-001 \$42.00
4-7: 25UOFIC06E-001 \$38.00

COST: YS-YXL: \$18.00

COST: YS-YXL: \$15.20



TIMBERWOLF TAUPE

YS-YXL: 25UOFIC06F-251 \$42.00
4-7: 25UOFIC06E-251 \$38.00

COST: YS-YXL: \$18.00

COST: YS-YXL: \$15.20



TITAN GRAY

YS-YXL: 25UOFIC06F-038 \$42.00
4-7: 25UOFIC06E-038 \$38.00

COST: YS-YXL: \$18.00

COST: YS-YXL: \$

WINTER YOUTH & BOY'S (4-YXL) - OUTDOOR SEPARATES - SHIP SEPT 2025

	4-7 - P7				YOUTH- P6			
SIZE BREAKDOWN:	4	5	6	7	YS	YM	YL	YXL
SIZE RATIO:	1	2	2	2	1	2	2	1



CASTLEROCK HTR
BLACK

YS-YXL: 25UOFIB32F-021 \$36.00

COST: YS-YXL: \$12.60



DARK MAROON

YS-YXL: 25UOFIB26F- 600 \$40.00
4-7: 25UOFIB26E- 600 \$36.00

COST: YS-YXL: \$14.00
COST: 4-7: \$12.60



BLUE SMOKE HTR
WASHED NAVY HTR

YS-YXL: 25UOFIB32F- 480 \$36.00
4-7: 25UOFIB32E- 480 \$32.00

COST: YS-YXL: \$12.60
COST: 4-7: \$11.20



BLACK / CASTLEROCK HTR
FIELD KHAKI

YS-YXL: 25UOFIB01F- 001 \$52.00

COST: YS-YXL: \$18.20



DARK MAROON/ BLACK
BLACK

YS-YXL: 25UOFIB03F- 600 \$48.00

COST: YS-YXL: \$16.00



CANTEEN GREEN/ MARINE OD GREEN
EXPEDITION GREEN/ FIELD KHAKI / KHAKI BASE

YS-YXL: 25UOFIB02F- 363 \$52.00

COST: YS-YXL: \$18.20



BLACK
BLACK

YS-YXL: 25UOFIB14F- 001 \$48.00

COST: YS-YXL: \$16.00



WASHED NAVY

YS-YXL: 25UOFIB21F- 477 \$48.00

COST: YS-YXL: \$13.50



BLACK

YS-YXL: 25UOFIC08F- 001 \$36.00

COST: YS-YXL: \$12.60



CANTEEN GREEN HTR

YS-YXL: 25UOFIC08F- 363 \$36.00

COST: YS-YXL: \$12.60



BLACK / ANTHRACITE /

YS-YXL: 25UOFIC02F- 001 \$42.00

COST: YS-YXL: \$14.70



WASHED NAVY

YS-YXL: 25UOFIC13F- 477 \$36.00

COST: YS-YXL: \$12.60

FALL BOY'S (12M-7) - OUTDOOR SETS - SHIP JULY 2025

	INFANT - P6			TODDLER- P6			4-7 - P7			
SIZE BREAKDOWN:	12M	18M	24M	2T	3T	4T	4	5	6	7
SIZE RATIO:	1	3	2	2	2	2	1	2	2	2

16-1



WASHED NAVY
TITAN GRAY
WASHED NAVY

4-7: 25UOFII25E- 477 \$42.00
TODD: 25UOFII25D- 477 \$42.00
INF: 25UOFII25C- 477 \$38.00

COST:

2T-7: \$14.70

12-24M: \$13.30

16-2



EXPEDITION GREEN
BAYOU
EXPEDITION GREEN

4-7: 25UOFII26E- 362 \$42.00
TODD: 25UOFII26D- 362 \$42.00
INF: 25UOFII26C- 362 \$38.00

COST:

2T-7: \$14.70

12-24M: \$13.30

16-3



MOD GRAY HEATHER
WASHED NAVY

4-7: 25UOFII24E- 052 \$42.00
TODD: 25UOFII24D- 052 \$42.00

COST:

2T-7: \$14.70

16-4



SUMMIT WHITE
CASTLEROCK WOODLAND CAMO
SUMMIT WHITE

4-7: 25UOFII23E- 270 \$42.00
TODD: 25UOFII23D- 270 \$42.00
INF: 25UOFII23C- 270 \$38.00

COST:

2T-7: \$14.70

12-24M: \$13.30

FALL BOY'S (12M-7) - OUTDOOR SETS - SHIP AUGUST 2025

	INFANT - P6			TODDLER- P6			4-7 - P7			
SIZE BREAKDOWN:	12M	18M	24M	2T	3T	4T	4	5	6	7
SIZE RATIO:	1	3	2	2	2	2	1	2	2	2

17-1



SURPLUS ORANGE
WOODLAND CAMO
FIELD KHAKI

4-7: 25UOFII11E- 804 \$44.00
TODD: 25UOFII11D- 804 \$44.00
INF: 25UOFII11C- 804 \$40.00

COST:
2T-7: \$15.40
12-24M: \$14.00

17-3



BLUE SMOKE
WASHED NAVY
BLUE SMOKE

4-7: 25UOFII05E- 480 \$44.00

COST:
4-7: \$15.40

17-2



CANTEEN GREEN
EXPEDITION GREEN / CANTEEN GREEN

4-7: 25UOFII14E- 363 \$44.00
TODD: 25UOFII14D- 363 \$44.00

COST:
2T-7: \$15.40

17-4



JASPER BLUE
BLACK / JASPER BLUE

4-7: 25UOFII09E- 479 \$44.00
TODD: 25UOFII09D- 479 \$44.00
INF: 25UOFII09C- 479 \$40.00

COST:
2T-7: \$15.40
12-24M: \$14.00

17-5



BLUE CALM / WASHED NAVY
WASHED NAVY

4-7: 25UOFII06E- 439 \$44.00
TODD: 25UOFII06D- 439 \$44.00
INF: 25UOFII06C- 439 \$40.00

COST:
2T-7: \$15.40
12-24M: \$14.00

WINTER BOY'S (12M-7) - OUTDOOR SETS - SHIP SEPTEMBER 2025

	INFANT - P6			TODDLER- P6			4-7 -P7			
SIZE BREAKDOWN:	12M	18M	24M	2T	3T	4T	4	5	6	7
SIZE RATIO:	1	3	2	2	2	2	1	2	2	2

18-1



JASPER BLUE/ CASTLEROCK HTR
BLACK ZIPPER
CASTLEROCK HTR / BLACK
4-7: 25UOFI100E- 479 \$48.00

COST:
4-7: \$16.80

18-2



BLUE ATLANTIS / MIDNIGHT NAVY
MIDNIGHT NAVY ZIPPER
MIDNIGHT NAVY / MIDNIGHT NAVY
4-7: 25UOFI100E- 476 \$48.00

COST:
4-7: \$16.80

18-3



BLACK PAINTED WETLANDS
BLACK

4-7: 25UOFI101E- 001 \$48.00
TODD: 25UOFI101D- 001 \$48.00
INF: 25UOFI101C- 001 \$44.00

COST:
2T-7: \$16.80
12-24M: \$15.40

18-4



CANTEEN GREEN PAINTED WETLANDS
EXPEDITION GREEN

4-7: 25UOFI101E- 363 \$48.00
TODD: 25UOFI101D- 363 \$48.00
INF: 25UOFI101C- 363 \$44.00

COST:
2T-7: \$16.80
12-24M: \$15.40

FALL YOUTH BOY'S - UNDERWEAR - SHIP JULY 2025

BOYS / UNDERWEAR

BOYS PERFORMANCE TECH BOXER BRIEF

MSRP: \$28

COST: \$11.20



SIZING: YS-YXL 25UWSHJ04F-001 25UWSHJ04F-413 25UWSHJ04F-989 25UWSHJ04F-988

UPDATED PACKAGING - SUSTAINABLE



25UWSHJ05F-001 25UWSHJ05F-413 25UWSHJ05F-730 25UWSHJ05F-815 25UWSHJ05F-402 25UWSHJ05F-365

BOYS PERFORMANCE COTTON BOXER BRIEF



YS-YXL 25UWSHJ25F-001 25UWSHJ25F-621 25UWSHJ25F-402 25UWSHJ25F-053 25UWSHJ23F-021

BOYS PERFORMANCE TECH MESH BOXER BRIEF



25UWAIJ09F-001 25UWAIJ09F-413 25UWAIJ09F-621 25UWFIJ00F-815

COPY DETAIL:

STEP YOUR UNDERWEAR GAME UP
They're light, cool, breathable, stay put as you move, and have zero-distraction fit.

Comfort Waistband

Lightweight & Durable

Wicks Moisture

No ride-up Leg

Biocide-Free Odor Control technology reduces odor in the underwear

Chafe-Free Seams

SIZING: YS-YXL

FALL BOY'S NEWBORN - TODDLER (0M-4T) - SHIP JULY 2025

	NEWBORN - P7				INFANT - P6			TODDLER - P6		
SIZE BREAKDOWN:	0-3M	3-6M	6-9M	9-12M	12M	18M	24M	2T	3T	4T
SIZE RATIO:	1	3	2	1	1	3	2	2	2	2



BLUE ATLANTIS
MIDNIGHT NAVY
WHITE

NB: 25UAFIN04A-476 \$24.00

COST: 0-12M: \$10.80



BLUE CALM
WHITE
BLUE SMOKE

INF: 25UAFIN03C-439 \$28.00
NB: 25UAFIN03A-439 \$28.00

COST: 0-24M: \$11.20



MOD GRAY HEATHER
HYPER GREEN
BLUE ATLANTIS

INF: 25UAFIN03C-052 \$28.00
NB: 25UAFIN03A-052 \$28.00

COST: 0-24M: \$11.20



FIELD KHAKI
CASTLEROCK

INF: 25UAFIC06C-265 \$34.00
NB: 25UAFIC06A-265 \$34.00

COST: 0-24M: \$15.30



HYPER GREEN
CASTLEROCK/MOD GRAY TWIST
BLACK

NB: 25UAFII37A-321 \$36.00

COST: 0-24M: \$14.00



BLUE ATLANTIS/TEAM ROYAL
BLACK
WHITE

NB: 25UAFII37A-476 \$36.00

COST: 0-24M: \$14.00



RED/WHITE/ MIDNIGHT NAVY
MIDNIGHT NAVY
WHITE

TOD: 25UAFII39D-621 \$45.00
INF: 25UAFII39C-621 \$45.00

COST: 2T-4T: \$18.00
COST: 12-24M: \$18.00



ORANGE BASE
CASTLEROCK
WHITE

TOD: 25UAFII38D-804 \$45.00
INF: 25UAFII38C-804 \$45.00

COST: 2T-4T: \$18.00
COST: 12-24M: \$18.00

FALL BABY BOY'S (0M-12M) BOY'S - SETS - SHIP AUGUST 2025

	NEWBORN - P7				INFANT - P6			TODDLER - P6		
SIZE BREAKDOWN:	0-3M	3-6M	6-9M	9-12M	12M	18M	24M	2T	3T	4T
SIZE RATIO:	1	3	2	1	1	3	2	2	2	2



STONE
MIDNIGHT NAVY
BLUE ATLANTIS/TIMBERWOLF TAUPE
NB: 25UAFII1WA-279 \$38.00

COST: 0-12M: \$13.30



BLACK
CASTLEROCK
TOD: 25UAFII1XD-001 \$42.00
INF: 25UAFII1XC-001 \$38.00
NB: 25UAFII1XA-001 \$38.00

COST: 2T-4T: \$14.70
COST: 0-24M: \$14.00



RED
CASTLEROCK HEATHER
BLACK/BLUE SMOKE/SQUAD ORANGE
NB: 25UAFII30A-621 \$40.00

COST: 0-12M: \$14.00



MOD GRAY HEATHER
MIDNIGHT NAVY
DIE DIE AT! ANTI/CI/CI AGLI IGLIT
TOD: 25UAFII1YD-052 \$42.00
INF: 25UAFII1YC-052 \$38.00
NB: 25UAFII1YA-052 \$38.00

COST: 2T-4T: \$14.70
COST: 0-24M: \$14.00



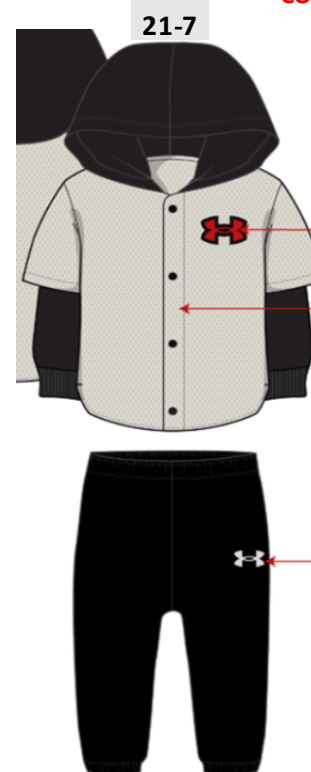
RED X SCARLET TWIST
TOD: 25UAFII34D-621 \$45.00
INF: 25UAFII34C-621 \$40.00
NB: 25UAFII34A-621 \$40.00

COST: 2T-4T: \$15.75
COST: 0-24M: \$14.00



BLUE ATLANTIS X BLUE SMOKE TWIST
MIDNIGHT NAVY
WHITE
NB: 25UAFII34A-476 \$40.00

COST: 0-12M: \$14.00



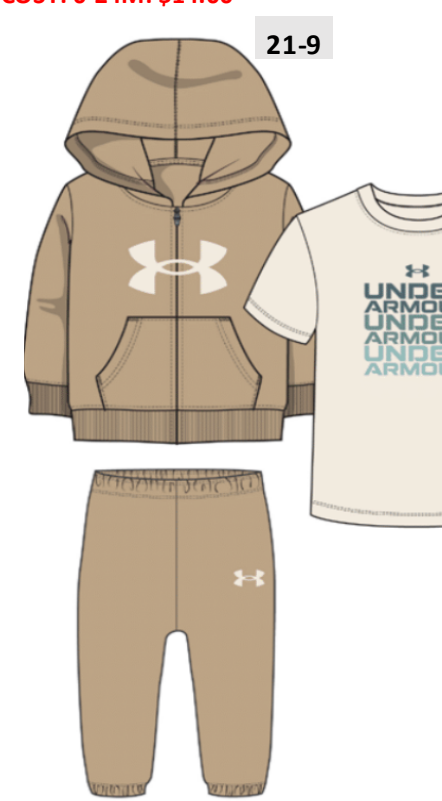
SUMMIT WHITE
TOD: 25UAFII1TD-270 \$48.00
INF: 25UAFII1TC-270 \$44.00
NB: 25UAFII1TA-270 \$44.00

COST: 0M-4T: \$17.80



RED
BLACK
MOD GRAY HEATHER
NB: 25UAFII44A-621 \$50.00

COST: 0-12M: \$17.50



FIELD KHAKI
STONE
SERPENTINE
NB: 25UAFII46A-265 \$50.00

COST: 0-12M: \$17.50



ROYAL
CASTLEROCK HEATHER
HYPER GREEN
NB: 25UAFII45A-402 \$50.00

COST: 0-12M: \$17.50

FALL GIRL'S (2T-6X)- FASHION SEPARATES - SHIP JULY 2025

	TODDLER - P6			4-6x - P6			
SIZE BREAKDOWN:	2T	3T	4T	4	5	6	6X
SIZE RATIO:	2	2	2	1	2	2	1

22-1



SEAGLASS BLUE
WHITE/SUPER PINK
SERPENTINE
4-6x: 25UAFIA00R-336 \$22.00
TOD: 25UAFIA00Q-336 \$22.00

COST: 2T-6X: \$9.90

22-2



PRIME PINK
SUPER PINK
FUCHSIA DUSK/SERPENTINE/WHITE
4-6x: 25UAFIA01R-685 \$22.00
TOD: 25UAFIA01Q-685 \$22.00

COST: 2T-6X: \$9.90

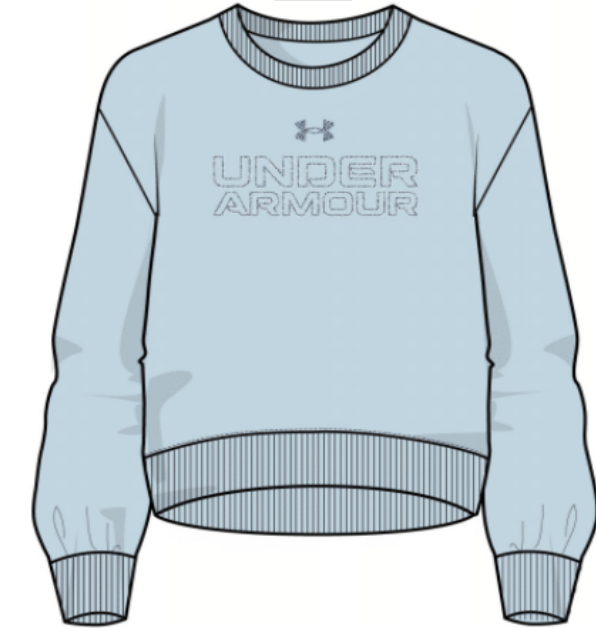
22-3



SUPER PINK
WHITE
FUCHSIA DUSK
4-6x: 25UAFIA02R-657 \$20.00
TOD: 25UAFIA02Q-657 \$20.00

COST: 2T-6X: \$9.00

22-4



BLUE CALM
4-6x: 25UAFIB19R-439 \$40.00
TOD: 25UAFIB19Q-439 \$40.00

COST: 2T-6X: \$14.00

22-5



SUPER PINK
WHITE
4-6x: 25UASIC33R-657 \$28.00
TOD: 25UASIC33Q-657 \$28.00

COST: 2T-6X: \$12.60

22-6



BLACK
WHITE
4-6x: 25UASIC33R-001 \$28.00
TOD: 25UASIC33Q-001 \$28.00

COST: 2T-6X: \$12.60

22-7



FUCHSIA DUSK
SUPER PINK
4-6x: 25UAFIC03R-550 \$28.00
TOD: 25UAFIC03Q-550 \$28.00

COST: 2T-6X: \$12.60

22-8



BLACK
WHITE
4-6x: 25UAFIC01R-001 \$28.00
TOD: 25UAFIC01Q-001 \$28.00

COST: 2T-6X: \$12.60

FALL GIRL'S (12M-6X) - SETS - SHIP JULY 2025

SIZE BREAKDOWN:	INFANT - P6			TODDLER - P6			4-6x - P6			
	12M	18M	24M	2T	3T	4T	4	5	6	6X
SIZE RATIO:	1	3	2	2	2	2	1	2	2	1

23-1

TRANSPARENT
WHITE / TRANSPARENT / BLUE CALM STATIC WOODLAND

4-6x: 25UAFI11VR-534 \$40.00
TOD: 25UAFI11VQ-534 \$40.00
INF: 25UAFI11VP-534 \$36.00

COST: 2T-6X: \$14.25
COST: 12-24M: \$12.50

23-2

STONE

4-6x: 25UAFI159R-279 \$42.00

COST: 4-6X: \$14.25

23-3

GLITTER

TRANSPARENT

4-6x: 25UAFI156R-534 \$42.00
TOD: 25UAFI156Q-534 \$42.00
INF: 25UAFI156P-534 \$38.00

COST: 2T-6X: \$14.25
COST: 12-24M: \$13.00

23-4

BLUE CALM

4-6x: 25UAFI198R-439 \$55.00
TOD: 25UAFI198Q-439 \$55.00
INF: 25UAFI198P-439 \$50.00
NB: 25UAFI198O-439 \$50.00

COST: 2T-6X: \$19.00
COST: 0-24M: \$17.50

23-5

TRANSPARENT / WHITE TWIST

4-6x: 25UAFI180R-534 \$46.00
TOD: 25UAFI180Q-534 \$46.00
INF: 25UAFI180P-534 \$42.00

COST: 2T-6X: \$16.80
COST: 12-24M: \$15.50

23-6

IRIDESCENT FOIL

TRANSPARENT

4-6x: 25UAFI174R-534 \$46.00

COST: 4-6X: \$15.00

23-7

GLITTER

BLUE CALM

4-6x: 25UAFI167R-439 \$46.00

COST: 4-6X: \$14.75

23-8

GLITTER

TRANSPARENT

4-6x: 25UAFI12R-534 \$50.00
TOD: 25UAFI12Q-534 \$50.00
INF: 25UAFI12P-534 \$46.00

COST: 2T-6X: \$16.80
COST: 12-24M: \$15.50

23-9

TRANSPARENT

4-6x: 25UAFI195R-534 \$50.00
TOD: 25UAFI195Q-534 \$50.00
INF: 25UAFI195P-534 \$46.00

COST: 2T-6X: \$16.80
COST: 12-24M: \$15.50

FALL GIRL'S (2T-6X) - FASHION SEPARATES - SHIP AUGUST 2025

	TODDLER - P6			4-6X - P6			
SIZE BREAKDOWN:	2T	3T	4T	4	5	6	6X
SIZE RATIO:	2	2	2	1	2	2	1

24-1



SEAGLASS BLUE
SUPER PINK/FUCHSIA DUSK
SERPENTINE
4-6x: 25UAFIA07R-336 \$24.00
TOD: 25UAFIA07Q-336 \$24.00

COST: 2T-6X: \$10.80

24-2



HD INK

SUPER PINK
WHITE / PRIME PINK
FUCHSIA DUSK
4-6x: 25UAFIA06R-657 \$24.00
TOD: 25UAFIA06Q-657 \$24.00

COST: 2T-6X: \$10.80

24-3



SUPER PINK
METALLIC SILVER
4-6x: 25UAFIB18R-657 \$40.00
TOD: 25UAFIB18Q-657 \$40.00

COST: 2T-6X: \$14.00

24-4



SUPER PINK
FUCHSIA DUSK
PRIME PINK / SERPENTINE
SEAGLASS BLUE / WHITE
4-6x: 25UAFIB05R-657 \$55.00

REF#: UAFIC04G
STYLE NAME: UA HG COLO

COST: 4-6X: \$24.75

24-5



SUPER PINK
WHITE
4-6x: 25UAFIH01R-657 \$38.00
TOD: 25UAFIH01Q-657 \$38.00
INF: 25UAFIH01P-657 \$34.00

COST: 2T-6X: \$13.50
COST: 12-24M: \$11.90

24-6

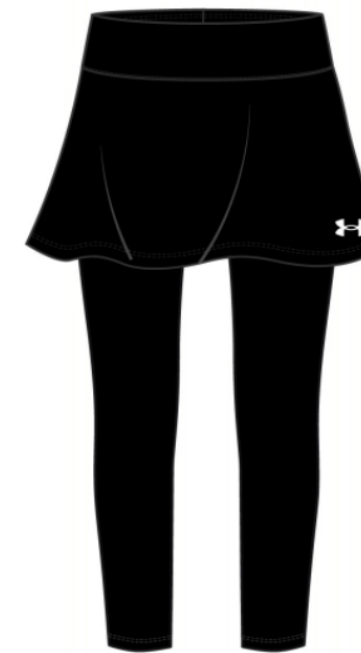


DIAPER COVER FOR
NB-INF ONLY

BLACK FLORAL EDGE DOT
SUPER PINK
WHITE
4-6x: 25UAFII1RR-001 \$38.00
TOD: 25UAFII1RQ-001 \$38.00
INF: 25UAFII1RP-001 \$34.00

COST: 2T-6X: \$13.50
COST: 12-24M: \$11.90

24-7



BLACK
WHITE
4-6x: 25UAFIC02R-001 \$32.00

COST: 4-6X: \$14.40

FALL GIRL'S - SETS - SHIP AUGUST 2025

	INFANT - P6			TODDLER - P6			4-6x - P6			
SIZE BREAKDOWN:	12M	18M	24M	2T	3T	4T	4	5	6	6X
SIZE RATIO:	1	3	2	2	2	2	1	2	2	1

25-1

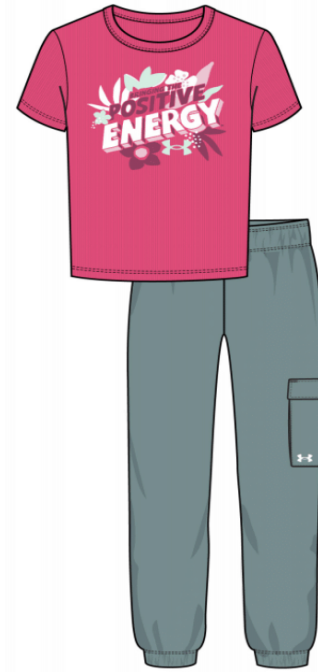


WHITE
FLORAL EDGE DOT PRINT

4-6x: 25UAFI158R-100 \$42.00
TOD: 25UAFI158Q-100 \$42.00
INF: 25UAFI158P-100 \$38.00

COST: 2T-6X: \$14.25
COST: 12-24M: \$13.50

25-2



SUPER PINK
SERPENTINE

4-6x: 25UAFI157R-657 \$42.00
TOD: 25UAFI157Q-657 \$42.00
INF: 25UAFI157P-657 \$38.00

COST: 2T-6X: \$14.25
COST: 12-24M: \$13.50

25-3

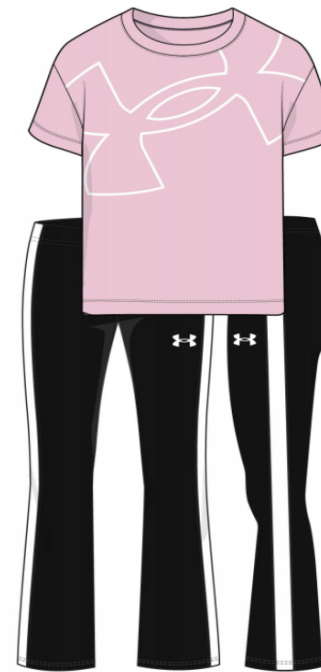


BLACK
SUPER PINK DAISY DITHER PRINT

4-6x: 25UAFI193R-001 \$50.00
TOD: 25UAFI193Q-001 \$50.00
INF: 25UAFI193P-001 \$46.00

COST: 2T-6X: \$16.80
COST: 12-24M: \$15.50

25-4

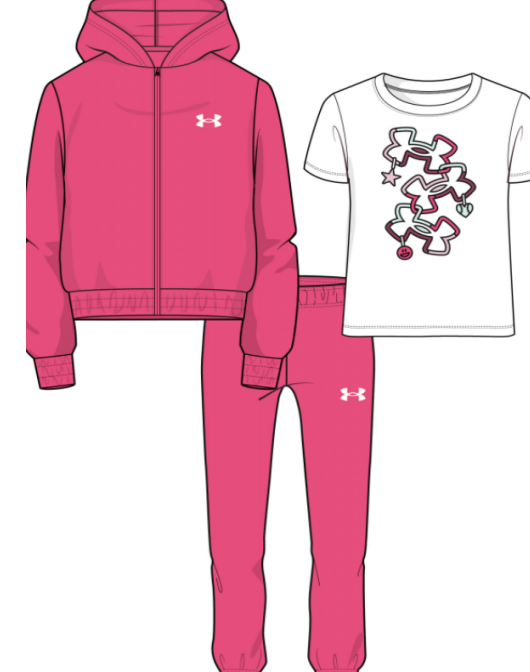


PRIME PINK
DIAGONAL HEARTBEAT PRINT

4-6x: 25UAFI162R-685 \$42.00
TOD: 25UAFI162Q-685 \$42.00
INF: 25UAFI162P-685 \$38.00

COST: 2T-6X: \$14.25
COST: 12-24M: \$13.50

25-5

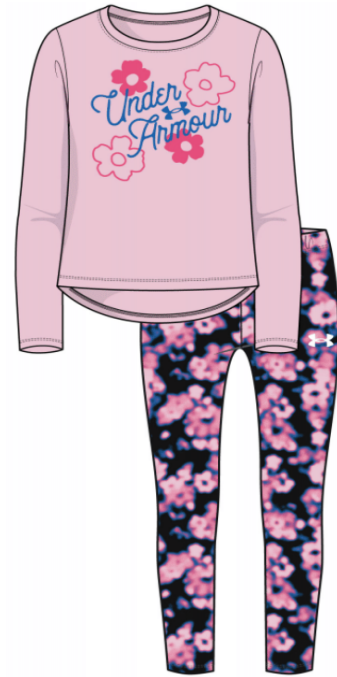


SUPER PINK

4-6x: 25UAFI199R-657 \$55.00
TOD: 25UAFI199Q-657 \$55.00
INF: 25UAFI199P-657 \$50.00
NB: 25UAFI199P-657 \$50.00

COST: 2T-6X: \$19.00
COST: 0-24M: \$17.50

25-6



PRIME PINK
HALFTONE FLORAL PRINT

4-6x: 25UAFI164R-685 \$46.00
TOD: 25UAFI164Q-685 \$46.00
INF: 25UAFI164P-685 \$42.00

COST: 2T-6X: \$14.75
COST: 12-24M: \$13.50

25-7



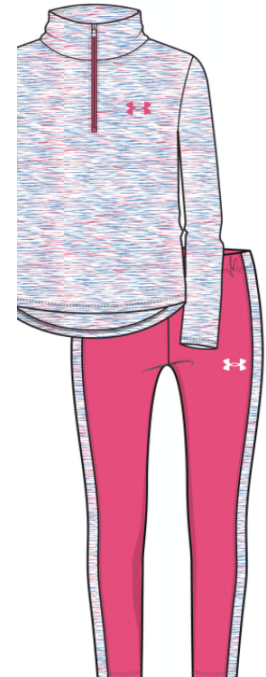
PUFF INK

PRIME PINK
UA CHEETAH PRINT

4-6x: 25UAFI168R-685 \$46.00
TOD: 25UAFI168Q-685 \$46.00
INF: 25UAFI168P-685 \$42.00

COST: 2T-6X: \$14.75
COST: 12-24M: \$13.50

25-8



SUPER PINK/ BLUE ATLANTIS/ WHITE TWIS'
SUPER PINK

4-6x: 25UAFI179R-657 \$46.00
TOD: 25UAFI179Q-657 \$46.00
INF: 25UAFI179P-657 \$42.00

COST: 2T-6X: \$16.80
COST: 12-24M: \$15.50

25-9

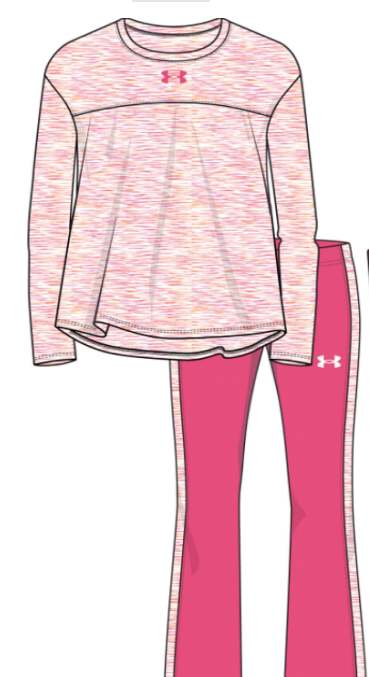


SUPER PINK / PRIME PINK TWIST
BLACK

4-6x: 25UAFI180R-657 \$46.00

COST: 4-6X: \$16.80

25-10



SUPER PINK / WHITE/ SQUAD ORANGE T1

4-6x: 25UAFI176R-657 \$46.00
TOD: 25UAFI176Q-657 \$46.00
INF: 25UAFI176P-657 \$42.00
NB: 25UAFI176O-657 \$42.00

COST: 2T-6X: \$15.00
COST: 0-24M: \$13.75

WINTER GIRL'S (12M-6X) - SETS - SHIP SEPTEMBER 2025

	INFANT - P6			TODDLER - P6			4-6x - P6			
SIZE BREAKDOWN:	12M	18M	24M	2T	3T	4T	4	5	6	6X
SIZE RATIO:	1	3	2	2	2	2	1	2	2	1

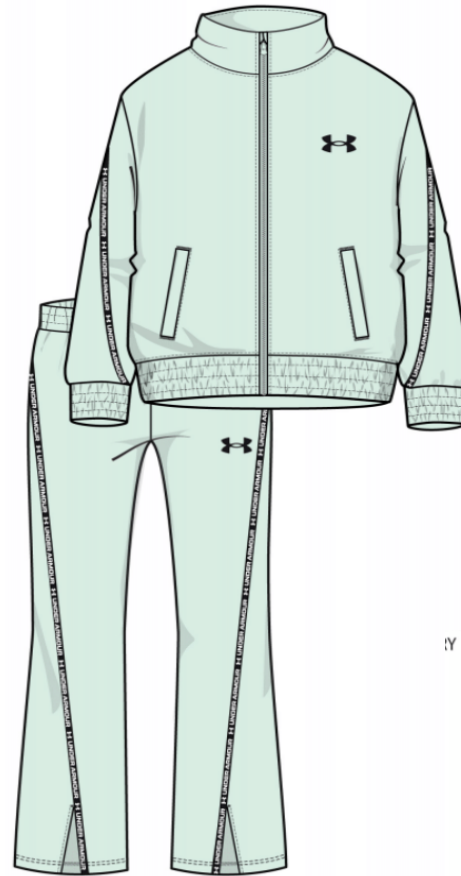
26-1



SEAGLASS BLUE FLORAL EDGE DOT PRI
 4-6x: 25UAFI185R-336 \$50.00
 TOD: 25UAFI185Q-336 \$50.00
 INF: 25UAFI185P-336 \$46.00

COST: 2T-6X: \$16.50
 COST: 12-24M: \$15.50

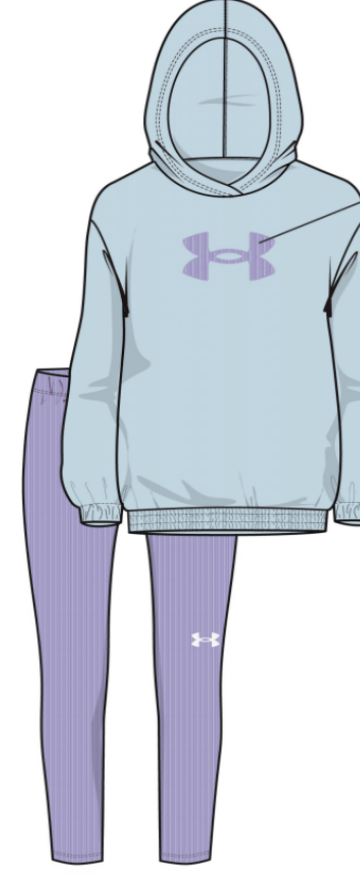
26-3



SEAGLASS BLUE
 4-6x: 25UAFI195R-336 \$50.00

COST: 4-6X: \$16.80

26-5



BLUE CALM
 TRANSPARENT
 I-6x: 25UAFI190R-439 \$50.00
 TOD: 25UAFI190Q-439 \$50.00
 NF: 25UAFI190P-439 \$46.00

COST: 2T-6X: \$16.80
 COST: 12-24M: \$15.50

26-2



SEAGLASS BLUE
 FLORAL GRAIN MULTI MICRO
 4-6x: 25UAFI166R-336 \$46.00
 TOD: 25UAFI166Q-336 \$46.00
 INF: 25UAFI166P-336 \$42.00

COST: 2T-6X: \$14.75
 COST: 12-24M: \$13.50

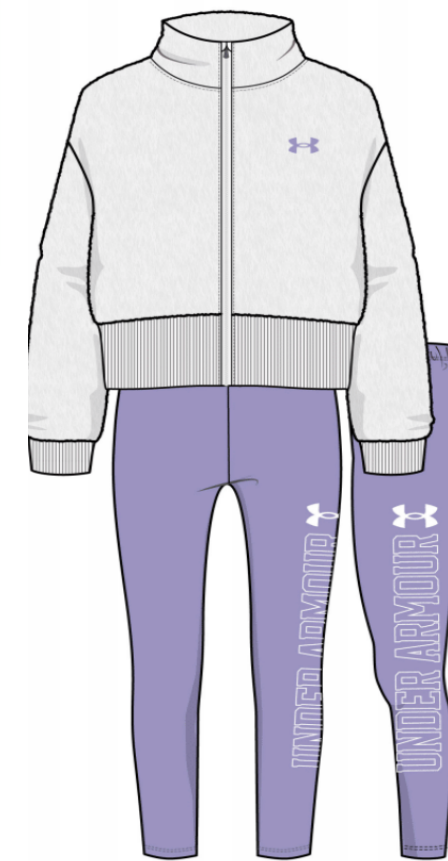
26-4



PINK FIZZ
 4-6x: 25UAFGI76R-693 \$48.00
 TOD: 25UAFGI76Q-693 \$48.00
 INF: 25UAFGI76P-693 \$44.00

COST: 2T-6X: \$14.75
 COST: 12-24M: \$13.50

26-6



WHITE
 TRANSPARENT
 4-6x: 25UAFI191R-100 \$52.00

COST: 4-6X: \$20.25

WINTER GIRL'S (12M-6X) - SETS - SHIP OCTOBER 2025

SIZE BREAKDOWN:	INFANT - P6			TODDLER - P6			4-6x - P6			
	12M	18M	24M	2T	3T	4T	4	5	6	6X
SIZE RATIO:	1	3	2	2	2	2	1	2	2	1



27-1

STONE
FLORAL EDGE DOT PRINT

4-6x: 25UAFI169R-279 \$46.00
TOD: 25UAFI169Q-279 \$46.00
INF: 25UAFI169P-279 \$42.00

COST: 2T-6X: \$14.75

COST: 12-24M: \$13.50



27-2

100% POLY
11%/40% POLY
*OLY 3% SPAN
ECT EMBROIDERY

BLACK
SUPER PINK

4-6x: 25UAFI190R-001 \$50.00

COST: 4-6X: \$16.80



27-3

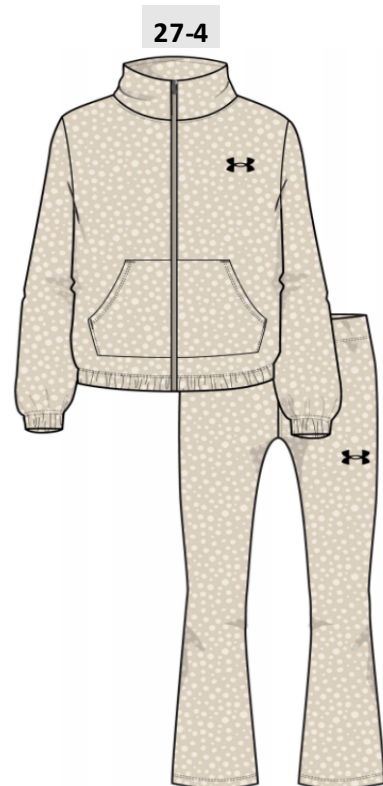
100% POLY
5% POLY/5% SPANDEX
POLY/8% SPANDEX
BROIDERY

STONE
BLACK

4-6x: 25UAFI108R-279 \$50.00
TOD: 25UAFI108Q-279 \$50.00
INF: 25UAFI108P-279 \$46.00

COST: 2T-6X: \$15.00

COST: 12-24M: \$14.00



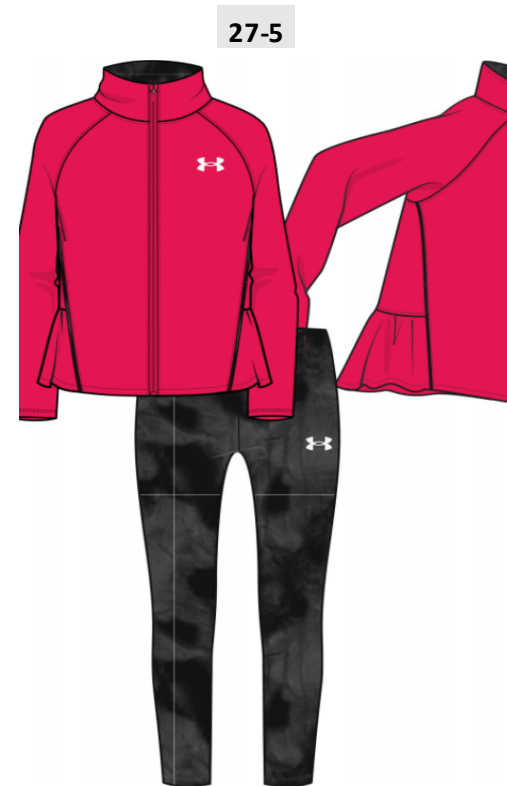
27-4

STONE FLORAL EDGE DOT PRINT

4-6x: 25UAFI115R-279 \$50.00
TOD: 25UAFI115Q-279 \$50.00
INF: 25UAFI115P-279 \$46.00

COST: 2T-6X: \$17.50

COST: 12-24M: \$16.10



27-5

RACER RED
BLACK SUN WASH

4-6x: 25UAFI194R-614 \$50.00
TOD: 25UAFI194Q-614 \$50.00
INF: 25UAFI194P-614 \$46.00

COST: 2T-6X: \$16.80

COST: 12-24M: \$15.50

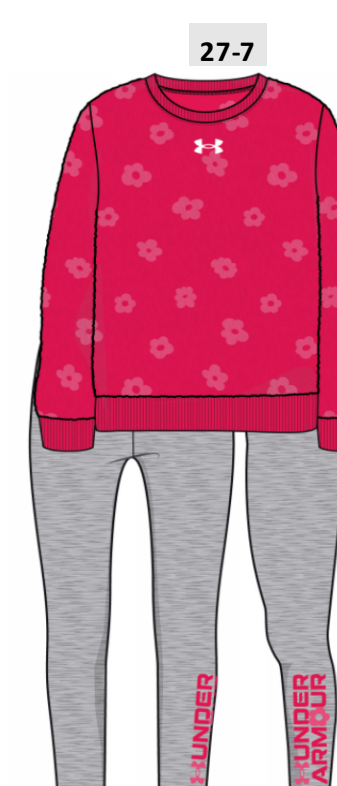


27-6

STONE
PRIME PINK

4-6x: 25UAFI172R-279 \$46.00

COST: 4-6X: \$15.00



27-7

RACER RED FLOWER PUFF PRINT
MOD GRAY HEATHER

4-6x: 25UAFI192R-614 \$52.00

COST: 4-6X: \$17

P.27

WINTER GIRLS'S (4-6X AND YOUTH S-XL) - PUFFER COATS - SHIP SEPT 2025

	INFANT:			TODDLER:			4-7/4-6X:				YS-YXL:			
SIZE BREAKDOWN:	12M	18M	24M	2T	3T	4T	4	5	6	7/6x	YS	YM	YL	YXL
SIZE RATIO:	1	2	1	1	2	1	1	2	2	1	1	2	2	1

28-1



MAROON MIST

YS-YXL : 25UJFIM43S-551 \$95.00 PRE 7/25

COST: YS-YXL: \$38.00

28-2



SERPENTINE
ROSE GOLD TRIM

YS-YXL : 25UJFIM25S-361 \$100.00 OPE

COST: YS-YXL: \$45.00

28-3



TRANSPARENT

25UJFIM32S-534 \$85.00

25UJFIM32R-534 \$75.00

COST: YS-YXL: \$34.00

COST: 4-6X: \$30.00

WINTER GIRLS'S (4-6X AND YOUTH S-XL) - FLEECE & WINDBREAKERS - SHIP SEPTEMBER 2025

	INFANT:			TODDLER:			4-7/4-6X:				YS-YXL:			
SIZE BREAKDOWN:	12M	18M	24M	2T	3T	4T	4	5	6	7/6x	YS	YM	YL	YXL
SIZE RATIO:	1	2	1	1	2	1	1	2	2	1	1	2	2	1

29-1



TOURMALINE PINK

YS-YXL :25UJFIM28S-678 \$75.00

4-6X:25UJFIM28R-678 \$65.00

COST: YS-YXL: \$30.10

COST: 4-6X: \$26.00

29-2



BLACK
TOURMALINE PINK

YS-YXL:25UJFIM68S-001 \$68.00 PRE 6/25

4-7: 25UJFIM68R-001 \$58.00 PRE 6/25

COST: YS-YXL: \$26.00

COST: 4-6X: \$23.20

29-3



TRANSPARENT
VIOLET GRAY

YS-YXL: 25UJFIM40S-534 \$85.00 PRE 6/25

4-6X: 25UJFIM40R-534 \$75.00 PRE 6/25

COST: YS-YXL: \$34.00

COST: 4-6X: \$30.00

FALL GIRLS'S (12M-6X) - OUTDOOR SETS - SHIP AUGUST 2025

	INFANT - P6			TODDLER- P6			4-6X - P6			
SIZE BREAKDOWN:	12M	18M	24M	2T	3T	4T	4	5	6	6X
SIZE RATIO:	1	3	2	2	2	2	1	2	2	1

30-1



MOD GRAY HEATHER
JASPER BLUE WOODLAND CAMO

4-6X: 25UOFII18R- 052 \$44.00
TODD: 25UOFII18Q- 052 \$44.00
INF: 25UOFII18P- 052 \$40.00

COST: 2T-6X: \$15.40
COST: 12-24M: \$14.00

30-2



PRIME PINK
TOURMALINE PINK WOODLAND CAMO

4-6X: 25UOFII19R- 685 \$44.00
TODD: 25UOFII19Q- 685 \$44.00
INF: 25UOFII19P- 685 \$40.00

COST: 2T-6X: \$15.40
COST: 12-24M: \$14.00

FALL GIRL'S YOUTH (7-16) - OUTDOOR SEPARATES - SHIP JULY 2025

	4-6X - P6				YOUTH-P6			
SIZE BREAKDOWN:	4	5	6	6X	YS	YM	YL	YXL
SIZE RATIO:	1	2	2	1	1	2	2	1

31-1



SERPENTINE HEATHER
WHITE

YS-YXL: 25UOFIA07S- 361 \$22.00

COST: YS-YXL: \$9.90

31-3



FUCHSIA DUSK

YS-YXL: 25UOFIA06S- 550 \$22.00

COST: YS-YXL: \$9.90

31-5



TOURMALINE PINK HEATHER
DARK MAROON

YS-YXL: 25UOFIA46S- 678 \$22.00

COST: YS-YXL: \$9.90

31-2



VIOLET GRAY HEATHER
WHITE

YS-YXL: 25UFIA08S- 537 \$22.00

COST: YS-YXL: \$9.90

31-4



BLACK
STEEL

YS-YXL: 25UOFIC16S- 001 \$34.00
4-6X: 25UOFIC16R- 001 \$30.00

COST: YS-YXL: \$11.90

COST: 4-6X: \$10.50

FALL GIRL'S YOUTH (7-16) - OUTDOOR SEPARATES - SHIP AUGUST 2025

	4-6X - P6				YOUTH- P6			
SIZE BREAKDOWN:	4	5	6	6X	YS	YM	YL	YXL
SIZE RATIO:	1	2	2	1	1	2	2	1

32-1



SUMMIT WHITE

YS-YXL: 25UOFIA02S- 270 \$32.00

COST: YS-YXL: \$12.80

32-2



WASHED NAVY HEATHER
WHITE

YS-YXL: 25UOFIA10S- 477 \$32.00

COST: YS-YXL: \$12.80

32-3



PRIME PINK
FUCHSIA DUSK

YS-YXL: 25UOFIA00S- 685 \$32.00

COST: YS-YXL: \$12.80

32-4



MOD GRAY HEATHER
FUCHSIA DUSK

YS-YXL: 25UOFIA03S- 052 \$32.00

COST: YS-YXL: \$12.80

32-5



FUCHSIA DUSK
PRIME PINK

YS-YXL: 25UOFIA05S- 550 \$32.00

COST: YS-YXL: \$12.80

32-6



MOD GRAY

YS-YXL: 25UOFIC14S- 052 \$42.00

COST: YS-YXL: \$18.00

32-7



BLACK

YS-YXL: 25UOFIC14S- 001 \$42.00

COST: YS-YXL: \$18.00

32-8



SERPENTINE HEATHER
BLUE CALM

YS-YXL: 25UOFIA43S- 361 \$32.00

COST: YS-YXL: \$12.80

32-9



JASPER BLUE WOODLAND CAMO

YS-YXL: 25UOFIC05S- 479 \$48.00

COST: YS-YXL: \$16.80

WINTER GIRL'S YOUTH (7-16) - OUTDOOR SEPARATES - SHIP SEPTEMBER 2025

	4-6X - P6				YOUTH - P6			
SIZE BREAKDOWN:	4	5	6	6X	YS	YM	YL	YXL
SIZE RATIO:	1	2	2	1	1	2	2	1

33-1



BLACK PAINTED WETLANDS

YS-YXL: 25UOFIB07S-001 \$52.00

COST: YS-YXL: \$18.50

33-2



BLACK

YS-YXL: 25UOFIC03S-001 \$42.00

COST: YS-YXL: \$14.70

33-3



VIOLET GRAY

YS-YXL: 25UOFIB04S-537 \$52.00

COST: YS-YXL: \$16.00

33-4



MOD GRAY TWIST

YS-YXL: 25UOFIC15S-052 \$34.00
4-6X: 25UOFIC15S-052 \$30.00

COST: YS-YXL: \$11.90
COST: 4-6X: \$10.50

33-5



PRIME PINK

YS-YXL: 25UOFIB04S-685 \$52.00

COST: YS-YXL: \$16.00

33-6



CASTLEROCK / TITAN GRAY / MOD GRAY

YS-YXL: 25UOIB12S-021 \$46.00

COST: YS-YXL: \$16.00

33-7



TRANSPARENT / BLUE CALM / WHITE

YS-YXL: 25UOIB12S-534 \$46.00

COST: YS-YXL: \$16.00

33-8



FUCHSIA DUSK / PRIME PINK / DARK MAROON

YS-YXL: 25UOIB12S-550 \$46.00

COST: YS-YXL: \$16.00

FALL GIRL'S BABY (0M-2T) - SETS - SHIP JULY 2025

	NEWBORN - P7				INFANT - P6			TODDLER - P6		
SIZE BREAKDOWN:	0-3M	3-6M	6-9M	9-12M	12M	18M	24M	2T	3T	4T
SIZE RATIO:	1	3	2	1	1	3	2	2	2	2

34-1

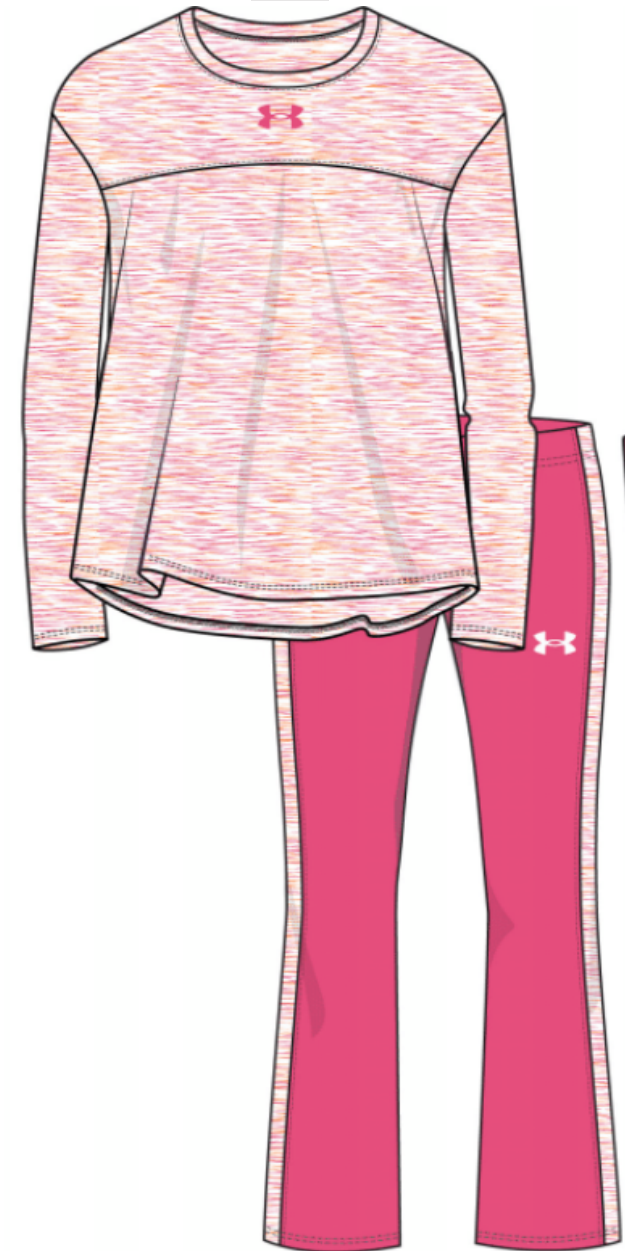


SUPER PINK
BLACK
WHITE

TOD 25UAFI33Q-657 \$46.00
INF: 25UAFI33P-657 \$42.00
NB: 25UAFI33O-657 \$42.00

COST: 2T-4T: \$14.75
COST: 0-24M: \$13.50

34-1



SUPER PINK / WHITE / SQUAD ORANGE T1
SUPER PINK
WHITE

NB: 25UAFI760-657 \$42.00

COST: 0-12M: \$13.75

FALL GIRL'S BABY (0M-12M) - SETS - SHIP AUGUST 2025

	NEWBORN - P7				INFANT - P6			TODDLER - P6		
SIZE BREAKDOWN:	0-3M	3-6M	6-9M	9-12M	12M	18M	24M	2T	3T	4T
SIZE RATIO:	1	3	2	1	1	3	2	2	2	2

35-2

ERY

EMBROIDER

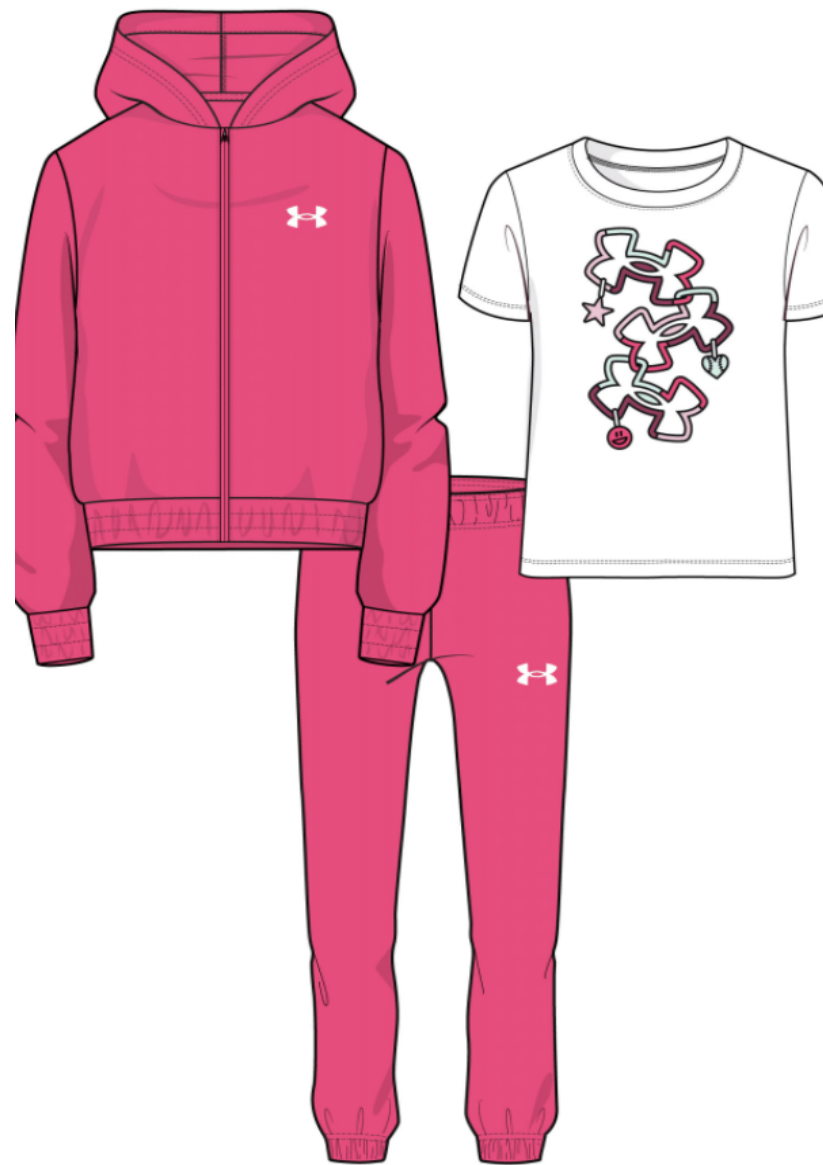
EMBROIDERY

PINK FIZZ
MOD GRAY HEATHER
WHITE

NB: 25UAFGI760-693 \$44.00

COST: 0-12M: \$13.50

35-1

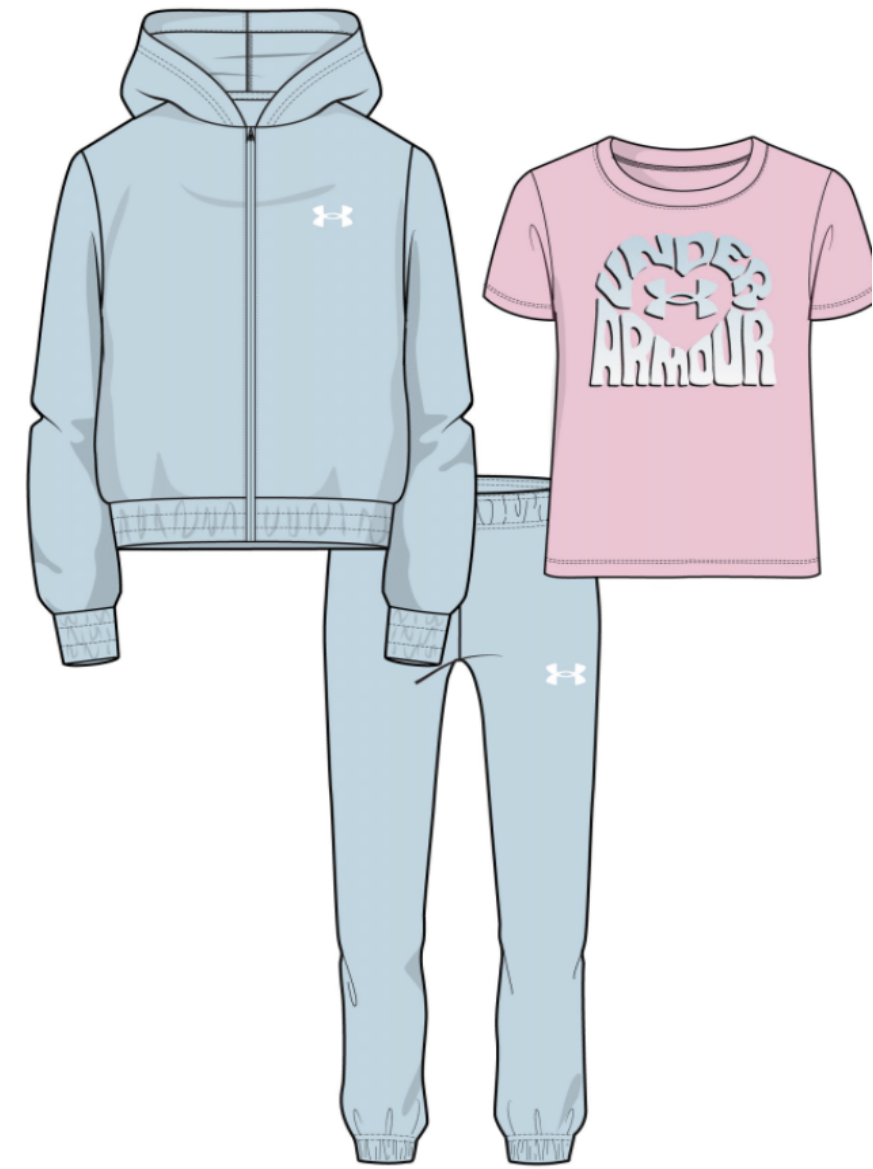


SUPER PINK
WHITE

NB: 25UAFI199P-657 \$50.00

COST: 0-12M: \$17.50

35-3



BLUE CALM
PRIME PINK / WHITE

NB: 25UAFI1980-439 \$50.00

COST: 0-12M: \$17.50